

FREEHOLD



Flat - Purpose Built (EPC Rating:)

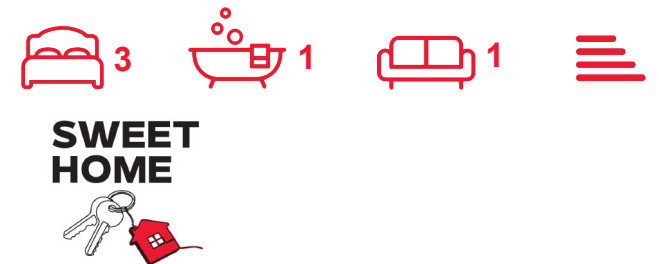
FLAT 24, 2 WOODEND COURT, MOUNT VERNON, G32 9QZ

Offers over

£150,000

FEATURES

- 3 spacious bedrooms
- 1 modern bathroom
- First floor flat
- Located in Mount Vernon
- Purpose-built flat
- Recently renovated kitchen
- Close to local amenities
- Easy access to transport

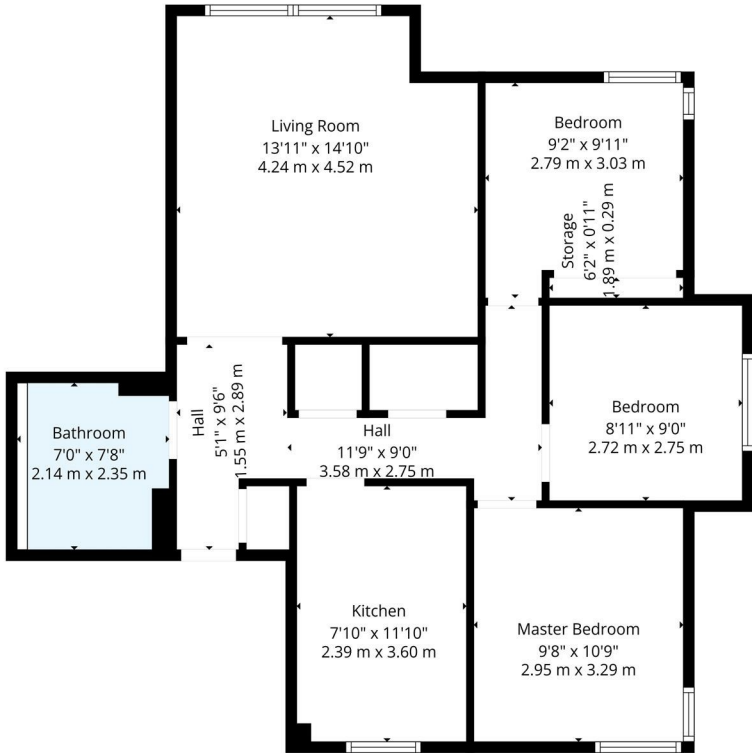


3 Bedroom Flat - Purpose Built located in Mount Vernon

Sweet Home Scotland are delighted to bring to market this charming purpose-built flat in the desirable Woodend Court area of Mount Vernon. This well-appointed home offers a comfortable and practical living space suited to families, first-time buyers and professionals alike.

The flat features a spacious reception room at the heart of the property, creating an inviting setting for day-to-day living and relaxing with family or friends. The kitchen was upgraded just last year with a fresh, modern finish, offering a clean and functional space for everyday cooking and meal prep. Three generously sized bedrooms provide plenty of flexibility, whether you need space for a growing family, a home office, or occasional guests. A well-maintained bathroom adds further convenience.


Built in 1985, the property blends modern comfort with a straightforward, functional layout designed to maximise light and space, giving the home a warm and welcoming feel throughout. The surrounding area offers easy access to everyday essentials, with local shops, parks and public transport links all close by.



TOTAL: 761 sq. ft, 71 m2
1st floor: 761 sq. ft, 71 m2
EXCLUDED AREAS: UNDEFINED: 9 sq. ft, 1 m2, STORAGE: 6 sq. ft, 1 m2, WALLS: 68 sq. ft, 6 m2
Floor Plan Created By Cubicasa App. Measurements Deemed Highly Reliable But Not Guaranteed.

Call us on
07717504350
sales@sweet-home.co.uk
<https://sweet-home.co.uk/>

Council Tax Band
D

Energy Efficiency Rating		
	Current	Potential
Very energy efficient - lower running costs		
(92 plus) A		
(81-91) B		
(69-80) C		
(55-68) D		
(39-54) E		
(21-38) F		
(1-20) G		
Not energy efficient - higher running costs		
Scotland	EU Directive 2002/91/EC 	

Agents Note: Whilst every care has been taken to prepare these particulars, they are for guidance purposes only. All measurements are approximate and are for general guidance purposes only and whilst every care has been taken to ensure their accuracy, they should not be relied upon and potential buyers are advised to recheck the measurements.

